

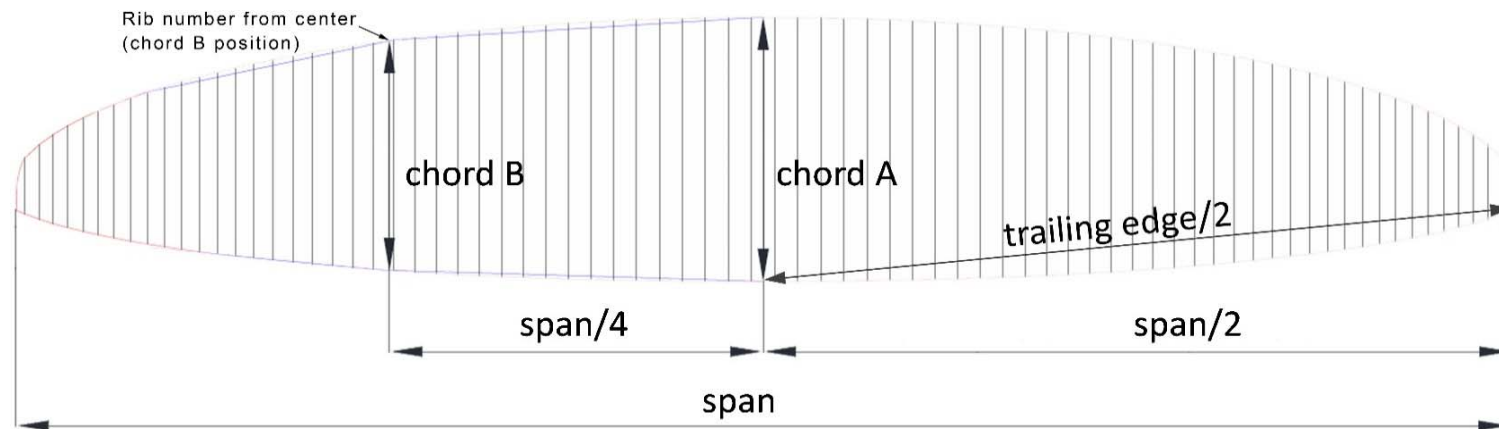
Measurement Report Template

CIVL CCC 2020 (Version 1.1)

Brand	Gin Gliders Inc.	Size	S	Test laboratory Cert. #	n/a
Model	Boomerang 13	Serial #	BN02-Q1080310P	Certification date	20.03.2024

Canopy dimensions

Position	Rib # from center	Distance [mm]	Tension [daN]	Manual tolerances	Aspect ratio $4 \cdot \text{span} / (\text{chord A} + 2.5 \cdot \text{Chord B})$	Number cells	Scale factor
Full Span		12890	5	+/-2%	7,53	111	1,04
1/2 Trailing Edge		6554	5	+/-1%			
Chord A		2063	1	+/-1%			
Chord B	25	1915	1	+/-1%			



Chord lenght, inlet position, tabs position measured from trailing edge.

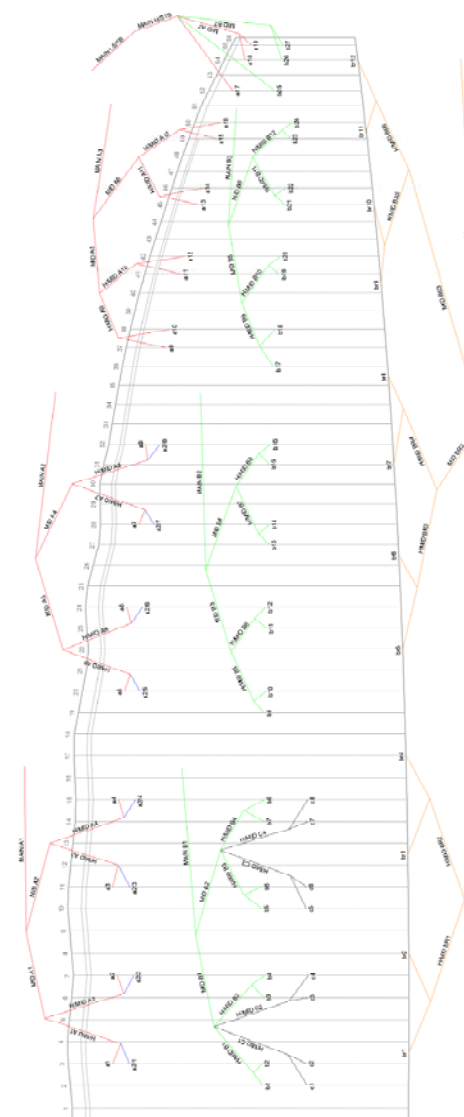
(The tab A & B & C can be on different rib, take care to specify it)

On first lined rib (from center)	Rib n° from center	Distance [mm]	Tension [daN]	Manual tolerances
Chord	2	2078	1	+/-1%
Top of inlet	2	2001	1	+/-1%
Bottom of inlet	2	1969	1	+/-1%
Tab Aa*	3	1818	1	+/-10mm
Tab Ab*	3	1710	1	+/-10mm
Tab B*	2	904	1	+/-10mm
Tab C*	2	634	1	+/-10mm

On last lined rib of Group 2 (from center)	Rib n° from center	Distance [mm]	Tension [daN]	Manual tolerances
Chord	32	1719	1	+/-1%
Top of inlet	32	1651	1	+/-1%
Bottom of inlet	32	1634	1	+/-1%
Tab Aa*	32	1501	1	+/-10mm
Tab Ab*	32	1417	1	+/-10mm
Tab B*	32	750	1	+/-10mm

On last lined rib (stabilo, from center)	Rib n° from center	Distance [mm]	Tension [daN]	Manual tolerances
Chord	55	480	1	+/-1%
Tab A*	55	408	1	+/-10mm
Tab B*	55	288	1	+/-10mm

*Bridle (tab) position measurement:
end of trailing edge to center bridle (tab)





Measurement Report Template

CIVL CCC 2020 (Version 1.0)

ABSOLUTE LINE LENGHT

Absolute line length from bottom riser to canopy in mm with 5daN of tension (Manual tolerances +/-10mm)
For scaled sizes: lines are within +/-20mm of the initial size x scale factor

Number	A1			A2			B		
	Glider	Manual	Delta	Glider	Manual	Delta	Glider	Manual	Delta
27								7161	
26								7123	
25								7155	
24								7332	
23								7321	
22								7339	
21								7359	
20								7429	
19		7141						7444	
18		7110						7540	
17		7191						7629	
16		7323						7761	
15		7302						7743	
14		7321						7746	
13		7343						7765	
12		7421						7820	
11		7439						7832	
10		7549						7934	
9		7595						7983	
8		7759			7743			8058	
7		7764			7746			8032	
6		7839			7818			8008	
5		7973			7952			8025	
4		8062			8043			8061	
3		8039			8013			8067	
2		8079			8057			8158	
1		8190			8167			8211	
1		8190			8167			8211	
2		8079			8057			8158	
3		8039			8013			8067	
4		8062			8043			8061	
5		7973			7952			8025	
6		7839			7818			8008	
7		7764			7746			8032	
8		7759			7743			8058	
9		7595						7983	
10		7549						7934	
11		7439						7832	
12		7421						7820	
13		7343						7765	
14		7321						7746	
15		7302						7743	
16		7323						7761	
17		7191						7629	
18		7110						7540	
19		7141						7444	
20								7429	
21								7359	
22								7339	
23								7321	
24								7332	
25								7155	
26								7123	
27								7161	

Number	C		
	Glider	Manual	Delta
4		8139	
3		8144	
2		8230	
1		8282	
1		8282	
2		8230	
3		8144	
4		8139	

Number	C		
	Glider	Manual	Delta
8		8100	
7		8078	
6		8081	
5		8098	
5		8098	
6		8081	
7		8078	
8		8100	

Measurement Report Template

CIVL CCC 2020 (Version 1.0)

Riser length

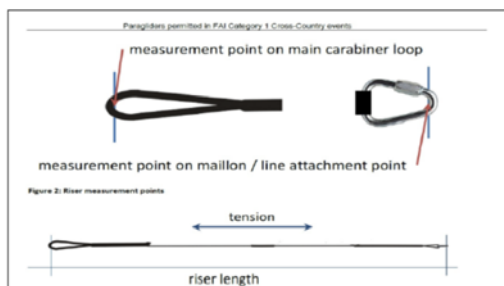
From bottom riser to top maillon on each branche in mm with 5daN (Manual tolerances +/-5mm)

Trimm speed setting	A	A'	Stabi	B	Δt (= A1-B)	Attachment rod \varnothing [mm]
Manual	520	485	505	520	0	10
Glider					0	

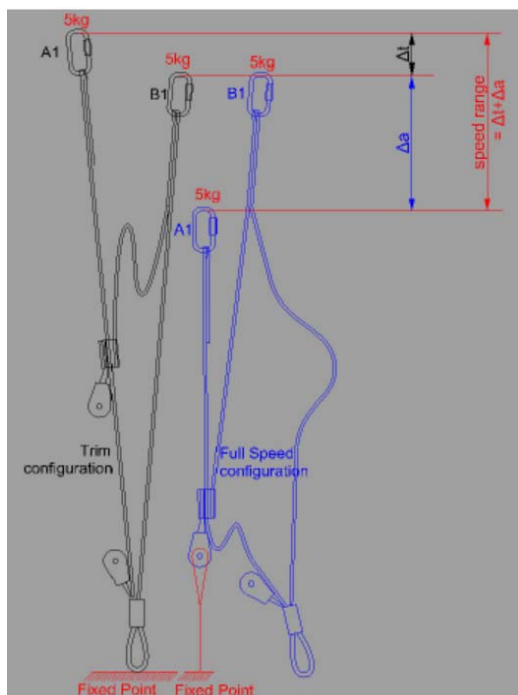
Full speed setting	Δa (=B-A)	B-A'	Total speed range ($\Delta t + \Delta a$)
Manual	142	125	142
Glider			0

High speed setting	Δa (=B-A1)	Total high speed range > 100
CCC	100	100
Glider		0

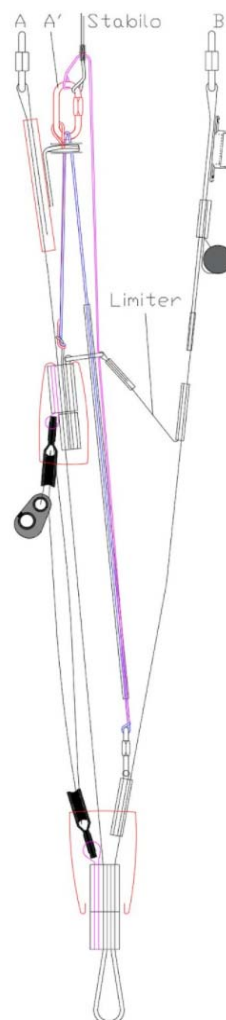
Riser measurment points



Riser measurment lengths



Riser drawing (manufacturer)





Measurement Report Template

CIVL CCC 2020 (Version 1.0)

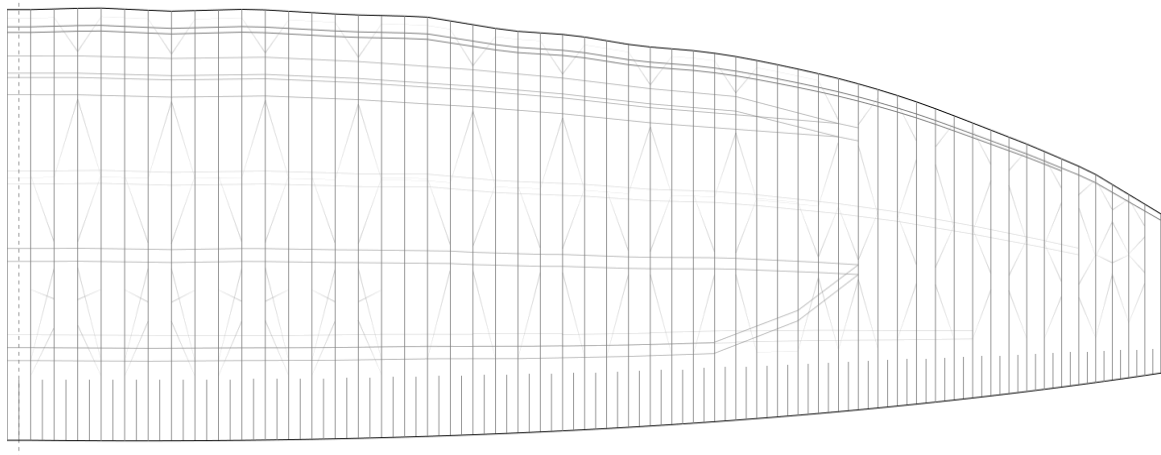
Table of line materials										
Upper										
	A1		A2		B		C		BR	
1	Edlerid	8001-090	Edlerid	8001-090	Edlerid	8001-050	Edlerid	8001-025	Edlerid	8001-025
2	Edlerid	8001-070	Edlerid	8001-050	Edlerid		Edlerid		Edlerid	
3	Edlerid	8001-070	Edlerid		Edlerid		Edlerid		Edlerid	
4	Edlerid	8001-070	Edlerid		Edlerid		Edlerid		Edlerid	
5	Edlerid	8001-090	Edlerid		Edlerid		Edlerid		Edlerid	
6	Edlerid	8001-070	Edlerid		Edlerid		Edlerid		Edlerid	
7	Edlerid	8001-070	Edlerid		Edlerid		Edlerid		Edlerid	
8	Edlerid	8001-070	Edlerid		Edlerid		Edlerid		Edlerid	
9	Edlerid	8001-050		Edlerid	8001-050		Edlerid		Edlerid	
10	Edlerid			Edlerid			Edlerid			
11	Edlerid			Edlerid			Edlerid			
12	Edlerid			Edlerid			Edlerid			
13	Edlerid			Edlerid			Edlerid			
14	Edlerid			Edlerid			Edlerid			
15	Edlerid			Edlerid			Edlerid			
16	Edlerid			Edlerid			Edlerid			
17	Edlerid	8000-025		Edlerid	8000-025		Edlerid			
18	Edlerid			Edlerid			Edlerid			
19	Edlerid			Edlerid			Edlerid			
20				Edlerid			Edlerid			
21				Edlerid			Edlerid			
22				Edlerid			Edlerid			
23				Edlerid			Edlerid			
24				Edlerid			Edlerid			
25				Edlerid			Edlerid			
26				Edlerid			Edlerid			
27				Edlerid			Edlerid			
H/middle										
	A			B				BR H/Middle		
1	Edlerid	8001-130		Edlerid	8001-050	Edlerid	8001-050	Edlerid	8001-025	
2	Edlerid			Edlerid		Edlerid				
3	Edlerid	8001-090		Edlerid		Edlerid		Edlerid		
4	Edlerid			Edlerid		Edlerid		Edlerid		
5	Edlerid			Edlerid		Edlerid	Edlerid			
6	Edlerid			Edlerid		Edlerid	Edlerid			
7	Edlerid	8001-070		Edlerid		Edlerid	Edlerid			
8	Edlerid			Edlerid		Edlerid	Edlerid			
9	Edlerid			Edlerid	Edlerid	Edlerid				
10	Edlerid			Edlerid	Edlerid	Edlerid				
11	Edlerid	8001-070		Edlerid	Edlerid	Edlerid				
12	Edlerid			Edlerid	Edlerid	Edlerid				
Middle										
	A			B				BR L/Middle		
1	Edlerid	8001-190		Edlerid	8001-070		Edlerid	8001-050		
2	Edlerid			Edlerid			Edlerid			
3	Edlerid			Edlerid			Edlerid			
4	Edlerid			Edlerid			Edlerid			
5	Edlerid	8001-090		Edlerid						
6	Edlerid	8001-090		Edlerid						
7	Edlerid	8001-025		Edlerid	8001-025					
Main										
	A			B				BR H/Main		
1	Edlerid	8001-340		Edlerid	8001-190		Edelrid	8001-090		
2	Edlerid			Edlerid	8001-190		BR L/Main			
3	Edlerid	8001-190		Edlerid	8001-090		GIN	TGL220		
STB H/Main	Edelrid	8001-070								
STB L/Main	Liros	PPSL-065								

Measurement Report Template

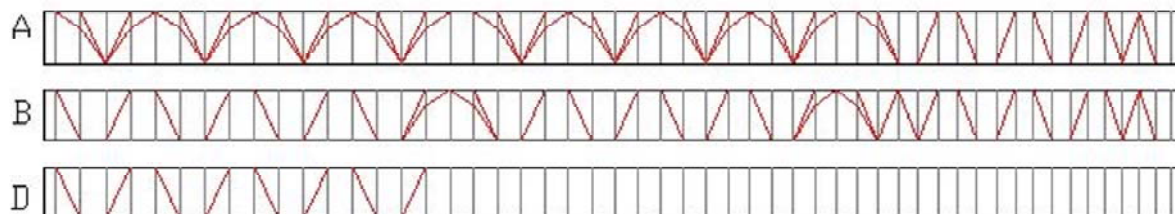
CIVL CCC 2020 (Version 1.0)

Drawings and pictures

Diagonals, Hstraps and Mini Ribs (bottom view)



Diagonals (Front view)



Vent (Inlet) shape

